

STANDARD AND OPTIONAL

BETECH
New Innovation

STANDARD FEATURES FOR DFK & SERIES

OPTIONAL FEATURES FOR DFK & DFJ SERIES

INJECTION UNIT

Nitride screw barrel
High torque low speed oil motor
Reverse cable device
Lengthened nozzle
Device for preventing screw rod from moving in advance at low temperature
Three stage injection process control
Two stage pressure and melt control
Injection position linear electronic ruler control
The proportion of melt pressure control

CLAMPING UNIT

Five point double machine hinge clamping device
Hydraulic single pumping unit
Automatic mould adjusting device
Hard chrome plated alloy steel column
Low pressure mold protection setting
Dual electrical and mechanical safety settings
Hopper and electric eye control cycle begins
Top out stop, multiple top out, shake out the top
Three stage mode locking stroke control
Linear electronic ruler control mode locking position

CONTROL UNIT

Time radio control
PID temperature control
Manipulator control interface

HYDRAULIC UNIT AND OTHERS

Automatic lubricating device
Imported hydraulic components
High temperature alarm device

INJECTION UNIT

Special screw barrel
Sol cylinder thermal insulation cover
Lengthened nozzle
Energy storage device special express
Movable unloading hopper device
Standard discharge hopper device

CLAMPING UNIT

Blowing device
Hydraulic safety lock device
Hydraulic multi core pulling system device

CONTROL UNIT

Installation of mechanical and electrical wiring and procedures
Sol motor speed display

BLOWING DEVICE

PVC fan device
Hydraulic and other parts
Semi closed loop control system
Cooling water flow meter and thermometer
Low oil level alarm device
The temperature induced regulation of cooling water control device

BETECH
New Innovation

7 / 24 DESTEK HATTI
+90 539 688 11 16

ECO 100T-1700T SERIES

PLASTIC INJECTION MOLDING MACHINE



COMPANY PROFILE *HAKKIMIZDA*

BETECH
New Innovation

50 yıllık plastik enjeksiyon tecrübemizle sektördeki eksikleri ve ihtiyaçları kullanıcı gözü ile analiz ederek makine sektörüne yeni bir soluk getirme amacıyla siz değerli müşterilerimize hizmet verme yoluna çıktık.

Günümüzün teknolojisini yarınların ihtiyaçlarını da göz önünde bulundurarak sizlere sunuyoruz.BETECH olarak kalite ve donanımdan ödün vermeden bütün kullanıcılarımızın ihtiyaçlarına uygun makineleri sizlerle buluşturuyoruz, Uzman servis kadromuzla sizlerin taleplerine hızlı ve kalıcı çözümler üretmeye hazırız.

ECO serisi makinelerimiz , her türlü üretim ihtiyacına göre en üst donanım yapısı ve artı özellikleri ile Uzakdoğu makinelerinden ayrılmaktadır, BETECH makineleri ile uzun yıllar boyu verimli üretim keyfini yaşayacaksınız.

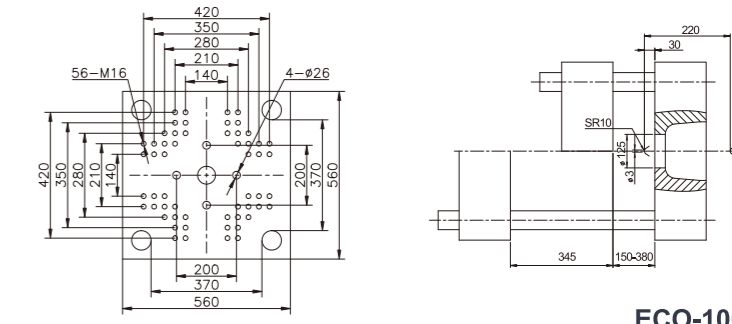
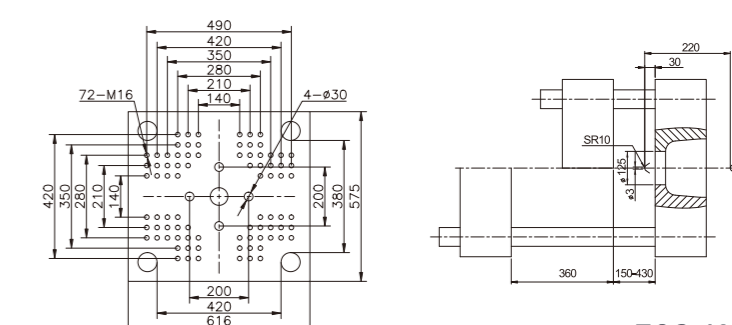
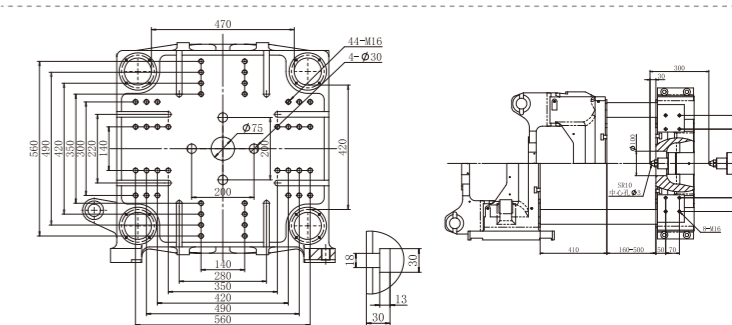
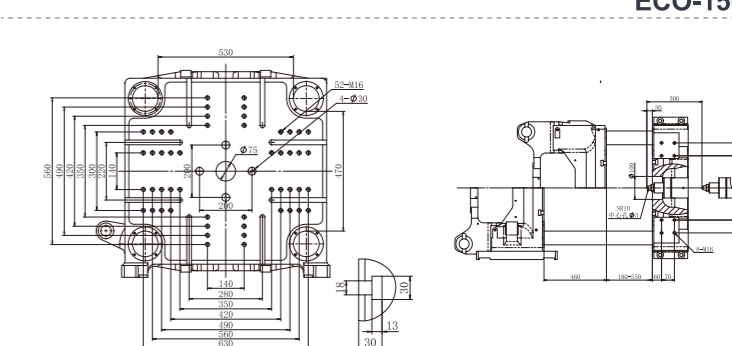
With our 50 years of plastic injection experience, we have set out to serve our valued customers in order to bring a new breath to the machinery sector by analyzing the deficiencies and needs in the sector through the eyes of the user.

We offer you today's technology by considering the needs of tomorrow. As BETECH, we bring you machines that meet the needs of all our users without sacrificing quality and hardware. With our expert service staff, we meet your demands.

Our ECO series machines are differentiated from Far East machines with their top hardware structure and plus features according to all kinds of production needs, With BETECH machines, you will enjoy efficient production for many years.

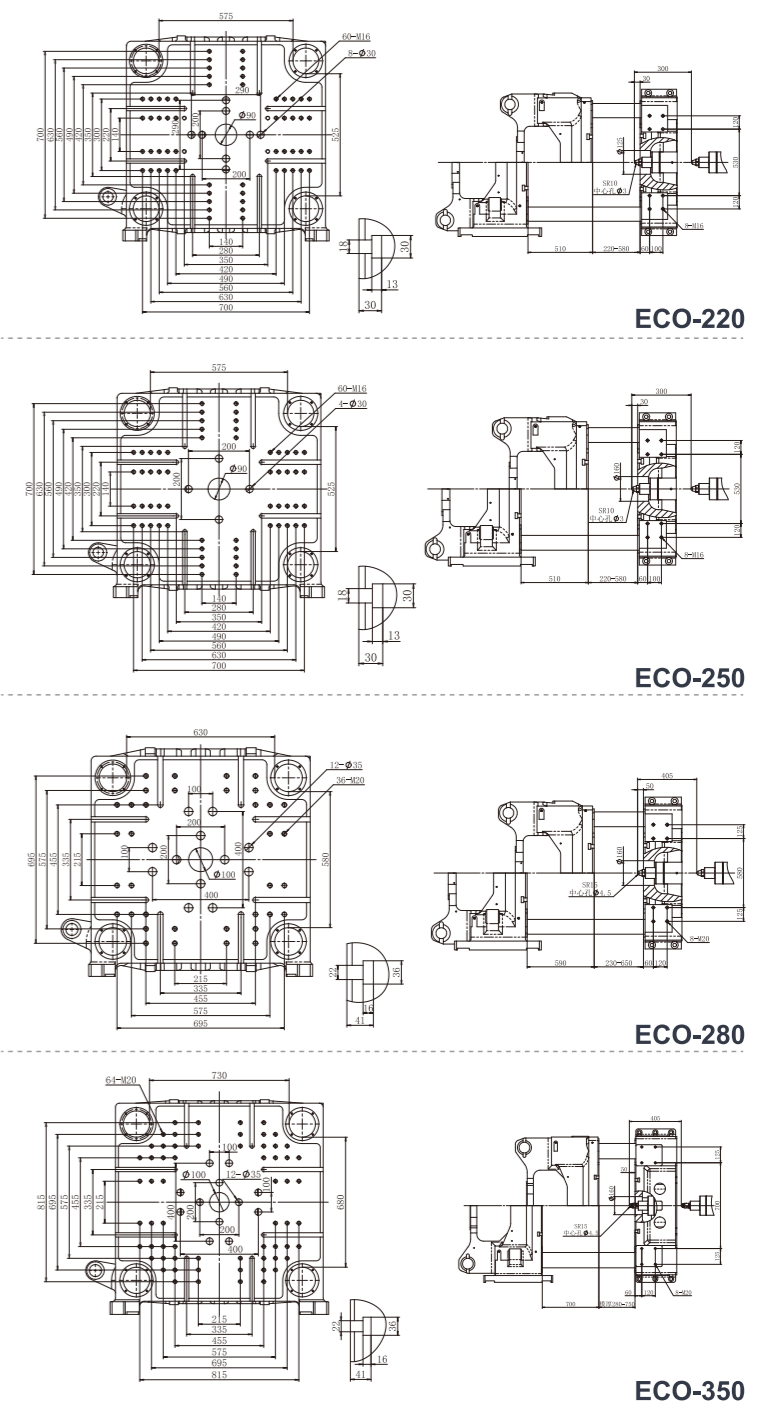


SPECIFICATIONS

SPECIFICATIONS	UNIT	ECO-100			ECO-120			ECO-150			ECO-180			Template Size Drawing	
DESCRIPTION		391			447			616			790				
INJECTION UNIT															
Screw Diameter	mm	30	35	40	35	40	45	38	42	46	42	46	52	 <p>ECO-100</p>	
Screw L /D Ratio	L/D	23.3	21	18.7	23.8	20.5	18.5	24	22	20	24	22	19.5		
Shot Volume	cm ³	120	163	214	175	228	289	238	291	349	332	399	509		
Injection Weight (PS)	g	109	149	194	159	208	263	216	265	317	302	362	463		
Injection rate	g/s	66	87	108	105	127	156	112	137	164	154	184	236		
Injection Pressure	Mpa	310	228	174	243	186	147	260	212	177	238	198	155		
Screw Speed	rpm	200			220			210			230				
CLAMPING UNIT															
Clamp Tonnage	KN	1000			1200			1500			1800				 <p>ECO-120</p>
Toggle Stroke	mm	345			360			410			460				
Space Between Tie Bars	mm	370x370			420x380			470x420			530x470				
Max.Mold Height	mm	380			430			510			550				
Min. Mold Height	mm	150			150			160			180				
Ejector Stroke	mm	100			120			140			140				
Ejector Tonnage	KN	33			40			67			77				
OTHERS															
Max. Pump Pressure	Mpa	17.5			17.5			17.5			17.5			 <p>ECO-150</p>	
Pump Motor Power	Kw	11			15			18.5			23				
Heater Power	Kw	7.2			8.1			11.8			13.2				
Oil tank cubage	L	180			200			220			250				
Machine Dimension(L × W × H)	m	4.1x1.1x1.8			4.65x1.27x1.85			5.1x1.31x2.1			5.6x1.4x2.2				
Machine Weight	T	3.5			4.1			4.7			5.7				
 <p>ECO-180</p>															

We reserve the right to make any product improvement or specifications change without prior notice.

SPECIFICATIONS

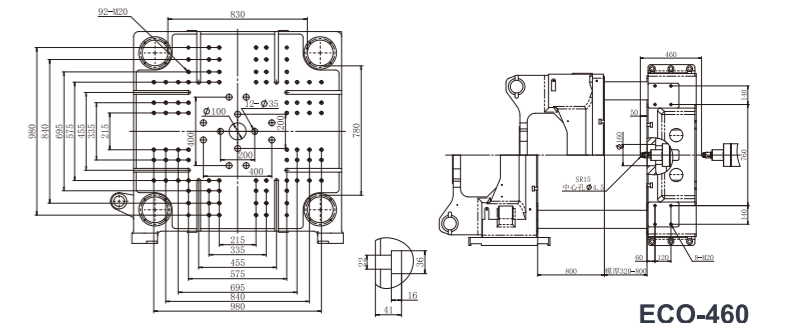
SPECIFICATIONS	UNIT	ECO-220			ECO-250			ECO-280			ECO-350			Template Size Drawing	
DESCRIPTION		876			1098			1701			2570				
INJECTION UNIT		A	B	C	A	B	C	A	B	C	A	B	C		
Screw Diameter	mm	46	50	55	46	52	58	58	63	68	65	70	75	 <p>ECO-220</p> <p>ECO-250</p> <p>ECO-280</p> <p>ECO-350</p>	
Screw L /D Ratio	L/D	22	22	20.3	24.8	22	19.7	23.8	22	20.3	23.6	22	20.5		
Shot Volume	cm ³	398	471	570	432	552	687	793	935	1090	1161	1346	1546		
Injection Weight (PS)	g	365	430	518	393	502	625	721	851	991	1056	1225	1407		
Injection rate	g/s	184	218	264	184	234	292	271	319	372	299	346	398		
Injection Pressure	Mpa	220	186	154	254	199	160	215	182	156	221	191	166		
Screw Speed	rpm	230			220			220			190				
CLAMPING UNIT															
Clamp Tonnage	KN	2200			2500			2800			3500				
Toggle Stroke	mm	510			510			590			700				
Space Between Tie Bars	mm	575x525			575x525			630x580			730x680				
Max.Mold Height	mm	580			580			650			750				
Min. Mold Height	mm	230			230			230			280				
Ejector Stroke	mm	170			170			170			200				
Ejector Tonnage	KN	99			99			99			99				
OTHERS															
Max. Pump Pressure	Mpa	17.5			16			16			16				
Pump Motor Power	Kw	23			30			37			45				
Heater Power	Kw	15.2			16.7			19.3			24.2				
Oil tank cubage	L	300			300			400			500				
Machine Dimension(L × W × H)	m	6.1x1.49x2.2			6.1x1.49x2.3			6.7x1.7x2.45			7.45x1.91x2.6				
Machine Weight	T	6.8			7.3			9.1			12.7				

We reserve the right to make any product improvement or specifications change without prior notice.

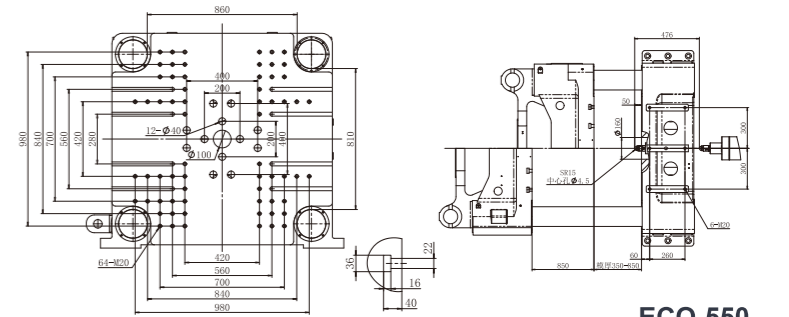
SPECIFICATIONS

SPECIFICATIONS	UNIT	ECO-460				ECO-550				ECO-650				ECO-800			
DESCRIPTION		2980				4144				4676				5670			
INJECTION UNIT		A	B	C	D	A	B	C	D	A	B	C	D	A	B	C	D
Screw Diameter	mm	70	75	80	85	75	80	85	90	90	95	100	105	90	95	105	110
Screw L /D Ratio	L/D	23.6	22.2	20.6	19.5	23.7	22.3	21	18.9	23	21	20	19	23	21	20	18.5
Shot Volume	cm ³	1443	1745	1985	2241	1749	1990	2247	2670	2544	2834	3140	3412	2925	3259	3982	4369
Injection Weight (PS)	g	1383	1588	1806	2039	1595	1820	2044	2430	2315	2579	2857	3150	2662	2966	3623	3977
Injection rate	g/s	337	414	471	513	434	471	521	550	527	587	650	717	556	619	756	830
Injection Pressure	Mpa	227	209	183	162	223	202	174	159	184	165	149	135	194	174	143	130
Screw Speed	rpm	190				155				149				110			
CLAMPING UNIT																	
Clamp Tonnage	KN	4600				5500				6500				8000			
Toggle Stroke	mm	800				860				900				1000			
Space Between Tie Bars	mm	830x780				870x810				925x875				1020x970			
Max.Mold Height	mm	800				850				900				960			
Min. Mold Height	mm	300				350				330				400			
Ejector Stroke	mm	200				250				335				340			
Ejector Tonnage	KN	110				150				150				210			
OTHERS																	
Max. Pump Pressure	Mpa	16				16				16				16			
Pump Motor Power	Kw	23+38.7				23+38.7				38.7+38.7				37+45			
Heater Power	Kw	26.7				28.9				42.8				54.3			
Oil tank cubage	L	600				800				900				1000			
Machine Dimension(L × W × H)	m	8.5x2.1x2.6				8.8x2.1x2.76				10.2x2.2x2.95				11.43x2.4x3.14			
Machine Weight	T	17.1				21.6				29.6				41			

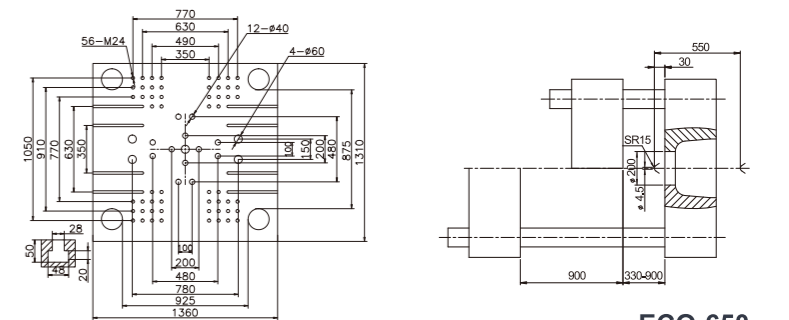
Template Size Drawing



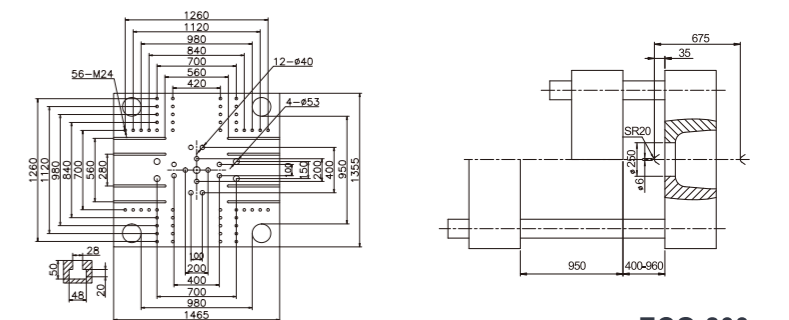
ECO-460



ECO-550



ECO-650

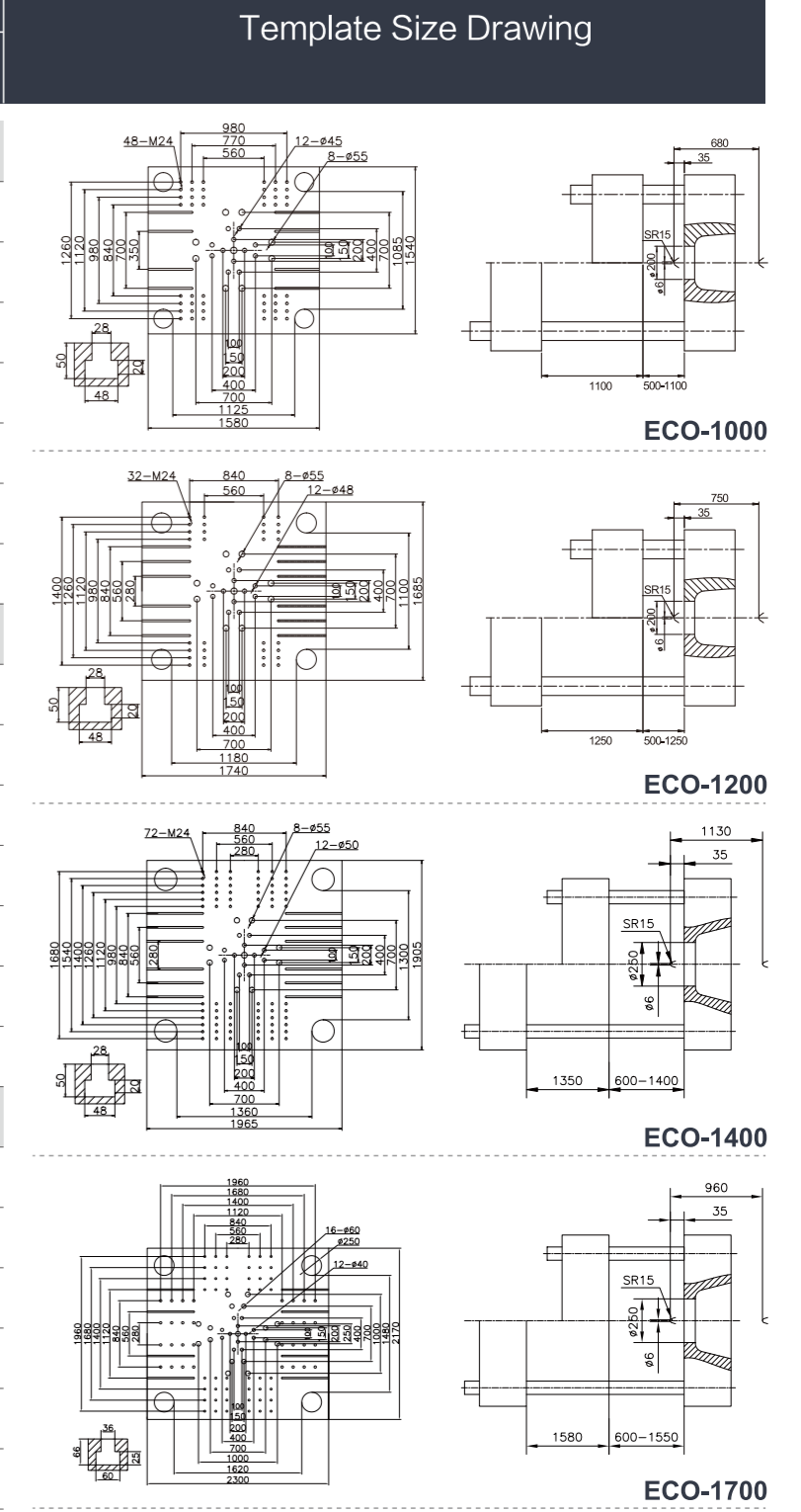


ECO-800

We reserve the right to make any product improvement or specifications change without prior notice.

SPECIFICATIONS

SPECIFICATIONS	UNIT	ECO-1000			ECO-1200				ECO-1400				ECO-1700			
DESCRIPTION		6086			9523											
		A	B	C	A	B	C	D	A	B	C	D	A	B	C	D
INJECTION UNIT																
Screw Diameter	mm	95	100	105	105	115	125	135	110	120	130	140	125	135	145	150
Screw L /D Ratio	L/D	23	21	20	23	21	20	18.5	25.7	24	22	20	25.4	23.4	21.7	18.9
Shot Volume	cm ³	3544	3927	4330	4811	5772	6819	7954	5984	7121	8357	9693	9509	11087	12791	1365
Injection Weight (PS)	g	3225	3574	3941	3972	5252	6205	7238	5445	6480	7605	8820	8653	10089	11640	12660
Injection rate	g/s	619	686	757	694	839	999	1173	815	970	1138	1320	1056	1240	1438	1650
Injection Pressure	Mpa	171	155	140	198	165	140	120	208	175	150	129	195	165	145	126
Screw Speed	rpm	108			106				90				85			
CLAMPING UNIT																
Clamp Tonnage	KN	10000			12000				14000				16600			
Toggle Stroke	mm	1100			1180				1350				1580			
Space Between Tie Bars	mm	1125x1085			1180x1100				1360x1300				1620x1480			
Max.Mold Height	mm	1100			1250				1400				1550			
Min. Mold Height	mm	500			500				600				700			
Ejector Stroke	mm	335			325				360				420			
Ejector Tonnage	KN	216			245				260				420			
OTHERS																
Max. Pump Pressure	Mpa	16			16				16				17.5			
Pump Motor Power	Kw	55+55			37+45+45				37+45+45				45+45+45			
Heater Power	Kw	61.3			60				86				94.9			
Oiltank cubage	L	1200			1500				2900				3000			
Machine Dimension(L × W × H)	m	11.7x2.8x3.3			11.9x2.9x3.15				15.2x3.00x4.13				16.35x3.15x4.17			
Machine Weight	T	49			52				83				125			



We reserve the right to make any product improvement or specifications change without prior notice.